



GARY NYLANDER/The Daily Courier

## Car seats go to those in need

The United Way Central and South Okanagan Similkameen delivered seven convertible car seats to the Westbank First Nation on Tuesday. Above are, in foreground, Amanda Fankhauser, with the WFN, and, behind her, from left, Maria Reed, with the WFN, Kelsey Lindley, with the WFN, Reanne Amadio, with the United Way, and Shauna Moir, with the WFN. The Child Safety Initiative is a partnership involving the United Way CSO, the Central Okanagan Foundation and the Kelowna General Hospital Foundation, which have joined forces to buy a total of 84 car seats at a discounted rate through corporate partner Costco Kelowna. A cube van was supplied by Budget Car and Truck Rental for South Okanagan deliveries last week. The car seats are delivered to partner agencies in eight communities including Lake Country, Kelowna, West Kelowna, Summerland, Penticton, Oliver, Keremeos and Princeton. The local agencies assess the needs of applicants and distribute the car seats to individuals in need.

## TECHNOLOGY

# Group partners with app maker to boost safety of sex workers

**Hope Outreach of Kelowna hopes to gather groups of women in Kelowna, Vernon and Penticton to begin testing app in December**

By The Canadian Press

VANCOUVER — An outreach group supporting vulnerable women in the Okanagan is hoping a cellphone app designed to monitor remote workers in resource industries will help keep sex workers safe.

Hope Outreach, a non-profit group that provides support to homeless and exploited women in Kelowna, is partnering with the makers of YodelMe to launch a pilot project to make the monitoring app available to sex workers and other vulnerable women in the Okanagan.

“What I can see it do is saving some lives, and that’s what I’m all about,” said Angie Lohr, president and co-founder of Hope Outreach.

YodelMe uses Wi-Fi, cellular and satellite technology to monitor users by having them check in and out at set time periods. If users don’t check in when they’re supposed to, a reminder is sent. If it’s ignored, the app sends a distress message to pre-programmed contacts with the user’s location.

Greg ter Wolbeek, business manager for YodelMe, said he and founder Aaron Kilback contacted the outreach group after reading about it in a local newspaper.

“It just struck me that, hang on, this is developed for lone workers, essentially they are lone workers, so perhaps we can help them,” he said.

Lohr said she and the women Hope Outreach works with were excited by the offer to help find a solution to the violence they experience.

“This stuff happens every day, and so I guess where I get a little annoyed is we wait for some tragedy to happen to focus any light on it,” she said. “We never really focus on who is picking these women up, why are they out there and what are we going to do to make them safe.”

Details of the pilot project are still in discussion, but Lohr said she hopes to gather groups of 10 women from Kelowna, Vernon and Penticton to begin trying out the app in December. The pilot project is also looking at establishing a neighbourhood watch-type group among sex workers for an added level of security, ter Wolbeek said.

“The idea is to create a Yodel community so people can communicate with one another so if you have an emergency that you’re in, you can see who in your Yodel community is nearby to help you,” said ter Wolbeek. “A nice way to look at it is this app is linking our virtual communities with a real-life community.”

Cecilia Benoit, a University of Victoria sociology professor researching sex work in Canada, said the app has potential to give women added security, but the challenge is users need someone they trust in their lives or have trust in the police to be on the receiving end of emergency messages.

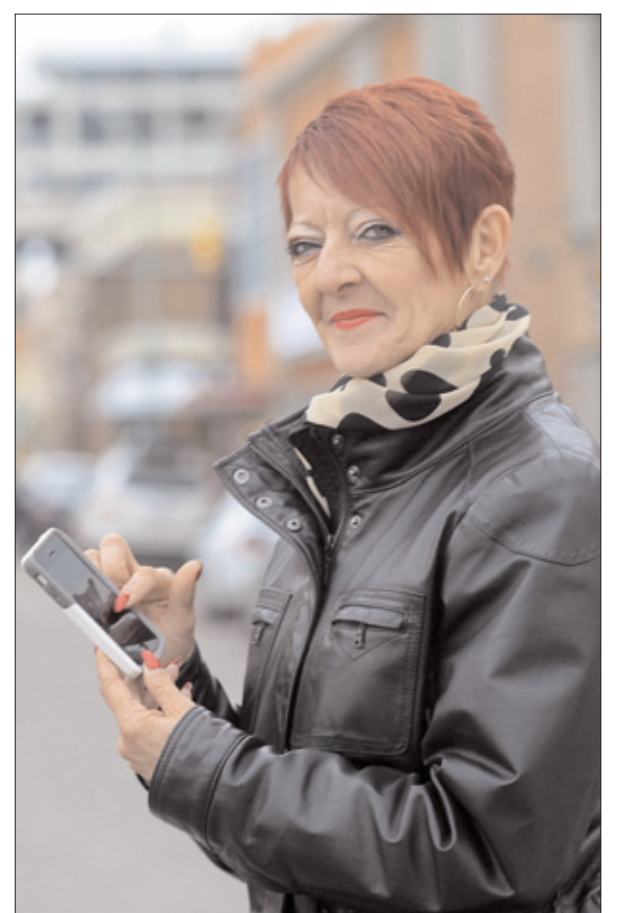
“The most vulnerable will be the least likely to have a trustworthy person,” she said.

A more meaningful approach in the longer term would be for Hope Outreach or other organizations to use the introduction of the app to connect users with resources, such as housing and employment programs, Benoit said.

“It’s a practical tool that can be helpful, but I don’t think it changes the situation. They still need the money, they are still going into these situations,” she said. “When they find a safe home, when they find a support system . . . they can start building more safety in their lives.”

Lohr said the business of sex work is never going to go away as long as there is a demand and there are vulnerable women with no other alternative.

Until there are more economic opportunities, housing, treatment for addictions and solutions for the other challenges women experience, Lohr said the app may at least help with their safety.



The Canadian Press

**Angie Lohr, president of Hope Outreach, is working with a technology company to create a phone app to provide safety for vulnerable women such as sex trade workers.**



Photo contributed

Small Business Walk dropped in at Frakas Boutique in Mission Park Shopping Centre, where Centro Consulting co-founder and Central Okanagan Economic Development Commission advisory board member Victor Narynskiy, left, met with Frakas staffer Diane Herron and Tom Dyas, president of the Kelowna Chamber of Commerce and TD Benefits.

## BUSINESS

# Labour shortage cloud on horizon for local companies

**41% of businesses surveyed during 6th annual Small Business Walk cite staffing challenges**

By STEVE MacNAULL  
The Daily Courier

Most Central Okanagan companies are growing and happy with the current business climate, but a labour shortage is starting to rear its head.

These findings came out of the just-released report the Central Okanagan Economic Development Commission generated after the sixth annual Small Business Walk on Oct. 4.

During the walk, representatives from the commission and 13 other organizations, including municipalities, chambers of commerce and industry organizations, visited 221 businesses in the region, asking questions.

“During the annual Small Business Walk, volunteers went door to door to businesses in communities from Lake Country to Peachland to listen to business owners and ask a few key questions to capture the pulse of the small-business community,” said commission director Corie Griffiths.

“This year’s walk included questions about employee retention and recruitment challenges, as well as the impact of fires and flooding in the region.”

While the number of businesses surveyed, 221, is a tiny fraction of the 13,600 total companies in the region, the results are considered to be reflective of the Central Okanagan’s economic prowess.

The walk saw businesses from all sectors, including retailers, restaurants, manufacturers and high-tech firms, surveyed.

“The business climate in the re-

gion continues to be strong, with 78 per cent of the 221 businesses surveyed indicating business is growing,” said Griffiths.

“Forty-one per cent of businesses cited staffing challenges, with positions in demand ranging from entry level to highly skilled.”

Besides taking the pulse of business, the results are used by the commission, municipalities and business groups to develop future programming.

For instance, knowing a labour shortage is here means organizations can lobby for more training in high school and more post-secondary courses to train youth for job openings.

Programs for adults to transition to the careers of tomorrow are also in place, and regional governments are pushing for more highly skilled immigrants to take on jobs that can’t be filled domestically.

Thirty-seven per cent of the labour shortage is for entry-level workers, 41 per cent is for semi-skilled workers, and 23 per cent is for professional and skilled workers.

Workers are needed in virtually every field and profession, from most construction trades, butchers, bakers and chefs, servers, baristas and dishwashers to mechanics, hairstylists, legal secretaries, store managers, architects, engineers, audiologists, opticians and doctors.

Businesses visited were also asked about the impact of flooding in the spring and wildfires in the summer.

Close to half cited a slight softening of business due to one or both of the natural disasters.

Even though most businesses weren’t affected physically by high waters, evacuations or smoke, tourism was down and local residents were distracted, so there was less business.

**Classic Shoes**

**SORE FEET?  
Knee, hip or back pain?**

**HAND CRAFTED SAS COMFORT SHOES**

**MEN’S & LADIES SAS SHOES** are recommended by many Podiatrists for people with diabetes, hammertoe, foot, knee, hip and back pain. In stock, Extra narrow to Extra wide!

**KELOWNA CROSSING (BY COSTCO)**  
140-2463 HIGHWAY 97 N.  
778.484.2688

**Landmark Cinemas**  
MOVIE LISTING FOR THURSDAY, NOVEMBER 9, 2017

**Landmark Cinemas Grand 10 Kelowna** Movie Line: 250.869.3939

**ADVANCE SCREENINGS NOV. 16th:**  
WONDER Thurs Night at 7:05 & 9:45 (PG)  
THE STAR Thurs Night at 6:35 & 8:50 (G)  
\*No Passes Accepted (until Nov. 30) – G.C.’s always accepted\*

**THOR: RAGNAROK (2D)** Thurs Night at 6:45, 7:15 & 9:45, Starting Friday: Fri – Wed Nightly at 6:30, 6:45, 7:00, 9:25, 9:40 & 9:55, Thurs Night at 6:45, 7:00, 9:40 & 9:55, Matinees Fri at 3:25, 3:40 & 3:55, Sat – Mon at 12:30, 12:45, 1:00, 3:25, 3:40 & 3:55 (PG)  
\*No Passes Accepted (until Nov. 19) – G.C.’s always accepted\*

**THOR: RAGNAROK (3D)** Thurs Night at 7:00, 10:00 & 10:15, Starting Friday: Nightly at 7:15 & 10:10, Matinees Fri at 4:10, Sat – Mon at 1:15 & 4:10 (PG) \*No Passes Accepted (until Nov. 19) – G.C.’s always accepted\*

**THE FLORIDA PROJECT Starts Friday!** Nightly at 6:40 & 9:35, Matinees Fri at 3:35, Sat – Mon at 12:40 & 3:35 (14A)

**PROFESSOR MARSTON AND THE WONDER WOMEN Starts Friday!** Nightly at 7:10 & 9:45 (14A)

**POKEMON THE MOVIE: I CHOOSE YOU!** Matinees Fri at 3:45, Sat – Mon at 1:10 & 3:45 (G)

**GOODBYE CHRISTOPHER ROBIN Starts Friday!** Nightly at 7:05 & 9:50, Matinees Fri at 3:50, Sat – Mon at 1:05 & 3:50 (PG)

**THE LEGO NINJAGO MOVIE** Nightly at 6:50, Matinees Fri at 3:20, Sat – Mon at 12:50 & 3:20 (G)

**ONLY THE BRAVE** Thurs Night at 6:40 & 9:35, Starting Friday: Nightly at 9:20 (PG)

**THE FOREIGNER** Nightly at 6:55 & 9:30 (14A)

**MY LITTLE PONY: THE MOVIE** Matinees Fri at 3:30, Sat – Mon at 12:55 & 3:30 (G)

**THE MOUNTAIN BETWEEN US** Thurs Night at 6:30 & 9:25, Starting Friday: Nightly at 6:35 & 9:15, Matinees Fri at 3:15, Sat – Mon at 12:35 & 3:15 (PG)

**SARDAR MOHAMMAD** (Punjabi W.E.S.T.) Thurs at 6:30 & 9:30 (Rating: TBA) Ends Thursday!

**GEOSTORM (2D)** Thurs at 6:50 & 9:50 (PG) Ends Thursday!

**THANK YOU FOR YOUR SERVICE** Thurs at 7:10, (14A)  
\*No Passes Accepted (until Nov. 9) – G.C.’s always accepted\* Ends Thursday!

**AMERICAN MADE** Thurs at 9:40 (14A) Ends Thursday!

**SAME KIND OF DIFFERENT AS ME** Thurs at 9:20 (PG) Ends Thursday!

**Landmark Cinemas Encore West Kelowna** Movie Line: 250.869.3939

**“SAME KIND OF DIFFERENT AS ME”**  
Friday – Monday, Thursday 12:40, 3:40, 6:40, 9:40  
Tuesday – Wednesday 6:40, 9:40 (PG)

**“VICTORIA AND ABDUL”**  
Friday – Monday, Thursday 12:50, 3:50, 6:50, 9:50  
Tuesday – Wednesday 6:50, 9:50 (PG)

**“GEOSTORM”**  
Friday – Sunday, Thursday 1:00, 4:00, 7:00, 10:00  
Monday 1:00, 7:00, 10:00; Tuesday – Wednesday 7:00, 10:00 (PG)

**“SUBURBICON”**  
Friday – Monday, Thursday 12:50, 3:50, 6:50, 9:50  
Monday – Wednesday 6:50, 9:50 (PG)

**“IT”**  
Friday – Monday, Thursday 12:30, 3:30, 6:30, 9:30  
Tuesday – Wednesday 6:30, 9:30 (14A)

**Landmark Cinemas 8 Extreme Okanagan Lake Shopping Plaza West Kelowna** Movie Line: 250.869.3939

**AMERICAN MADE** 14A 6:30 only (Starting Friday: 9:55 only)  
Under 14 Must be Accompanied by an Adult

**BLADERUNNER 2049 (Not in 3D)** 14A Starts Friday: 8:00 only; Fri-Mon Matinees: 1:00 & 4:30 Under 14 Must be Accompanied by an Adult

**ONLY THE BRAVE** PG 6:30 & 9:30 (Starting Friday: 6:55 only; Fri-Mon Matinees: 12:45 & 3:45)

**GEOSTORM (Not in 3D)** PG 6:35 & 9:35 (Ends Thursday)

**SUBURBICON** PG 9:30 only (Ends Thursday)

**JIGSAW** 18A 7:25 & 9:50 Under 18 Must be Accompanied by an Adult: PHOTO I.D. REQUIRED (Ends Thursday)

**A BAD MOM’S CHRISTMAS** 14A 6:55 & 9:25 (Starting Friday: 7:25 & 9:55; Fri-Mon Matinees: 1:25 & 3:55) Under 14 Must be Accompanied by an Adult

**THOR: RAGNAROK (Xtreme 3D)** PG 10:30 only (Starting Friday: Fri-Mon Matinees: 1:15 only) No Passes Accepted (Gift Certificates are Always Accepted)

**THOR: RAGNAROK (Xtreme)** PG 7:15 only (Starting Friday: 7:15 & 10:15; Fri-Mon Matinees: 4:15 only) No Passes Accepted (Gift Certificates are Always Accepted)

**THOR: RAGNAROK 3D** PG 6:45 only (Starting Friday: 6:45 & 9:30; Fri-Mon Matinees: 3:30 only) No Passes Accepted (Gift Certificates are Always Accepted)

**THOR: RAGNAROK (Not in 3D)** PG 10:00 only (Starting Friday: 6:30 & 9:45; Fri-Mon Matinees: 12:15, 12:30, & 3:15) No Passes Accepted (Gift Certificates are Always Accepted)

**MURDER ON THE ORIENT EXPRESS** PG \*Special Advanced Screenings\* Thurs, Nov 9th at 7:00 & 9:45; Starts Friday: 7:00 & 9:45; Fri-Mon Matinees: 1:00 & 3:45 No Passes Accepted (Gift Certificates are Always Accepted)

**DADDY’S HOME 2** PG \*Special Advanced Screenings\* Thurs, Nov 9th at 7:30 & 10:00; Starts Friday: 7:30 & 10:00; Fri-Mon Matinees: 1:30 & 4:00